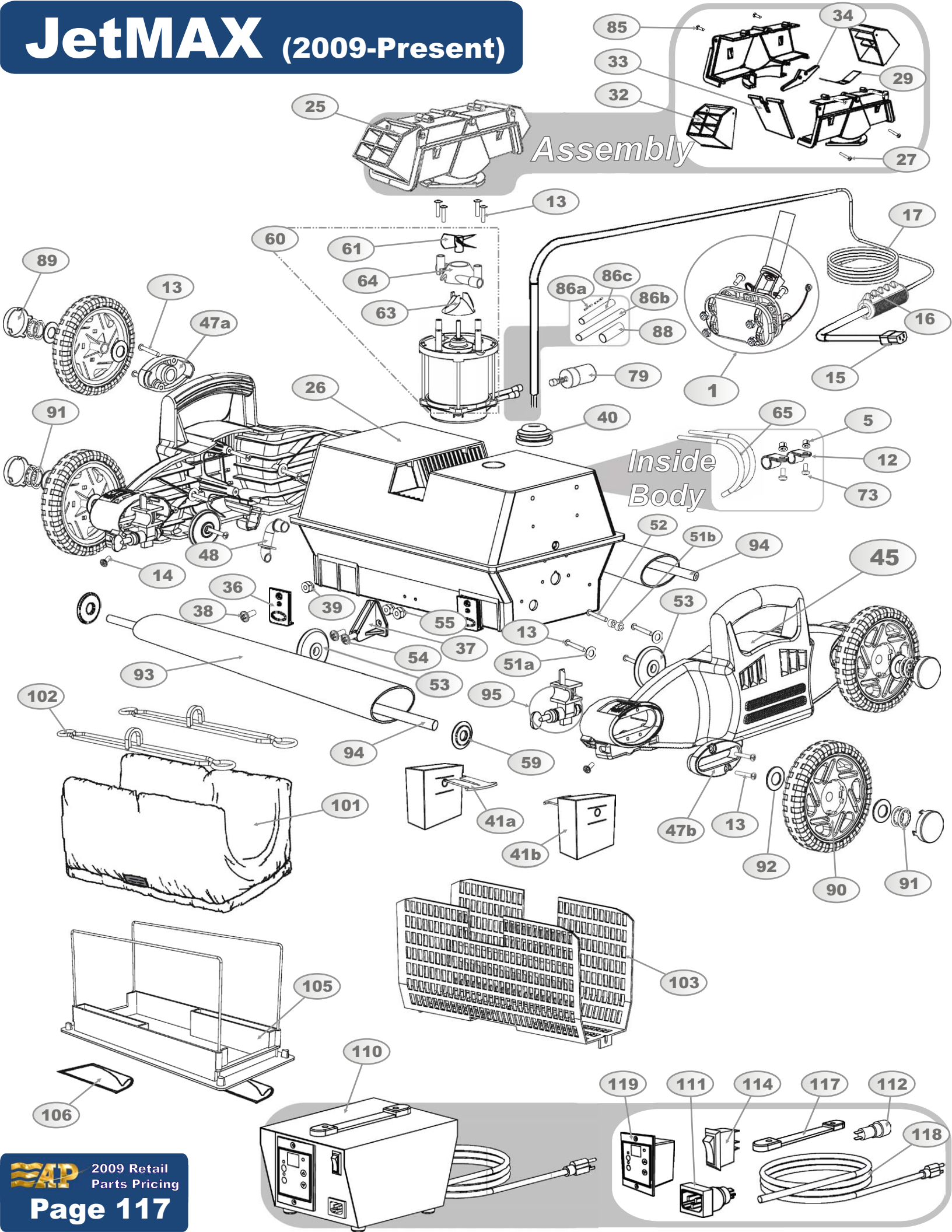


Assembly



← IMAGE #	PART #	ITEM NAME (Description) - Quantity per	JetMAX (2009-Present)	UNITS	LIST PRICE
1	A700002	MGA HANDLE ASSEMBLY (Plastic plates, Metal Swivel and hardware, Manual Guidance Attachement) - 1 per mac		EACH	\$99.96
5	5050	BODY INSERT (Brass, Reverse Block Insert, For inside Body to fasten P-Clip Screws) - 2 per machine		EACH	\$1.27
12	2100	P-CLIP (¼", Plastic, Use to secure the Cable to the Body) - 1 per machine		EACH	\$1.27
12	2101	P-CLIP (5/16", Plastic, Use to secure the Cable to the Body) - 2 per machine		EACH	\$1.27
13	2700	SCREW (#8, 11/16", Phil Pan-Flat Head, to fasten Sideplates, Bushings and Pump to Jet Valve) - 16 per machine		EACH	\$1.27
14	2260	SCREW (#6, 7/16", Phil Pan-Flat Head, for Sideplate ends to secure Locking Screw Assembly) - 4 per machine		EACH	\$1.27
15	1601	PLUG (3-Pin, Female, 2-Wire) - 1 per machine		EACH	\$14.63
16	S7930	EZ-SWIVEL (For 2-wire Cable) - 1 per machine		ASSEMBLY	\$46.62
17	16A101	CABLE ASSEMBLY (2-Wire, 100 Ft., Floating Cable, 16AWG, 2-Pin Male Connect) - 1 per machine		EACH	\$507.84
25	A8730BK	JET VALVE ASSEMBLY (Black, Complete assembled valve housing with Extension Brackets) - 1 per machine		EACH	\$42.38
26	S22022WJET	BODY ASSEMBLY (White, with Lock Tabs, no Valve Housing) - 1 per machine		EACH	\$215.60
27	2251	SCREW (8-18 x ¾, Phil Small Head, to hold sides of the Jet Valve Assembly together) - 4 per Valve Assembly		EACH	\$1.27
29	S8731	VALVE SPRING (St.Steel, Hinge-spring, Use inside of Jet Valve Assembly) - 1 per Valve Assembly		EACH	\$4.66
32	8729	EXTENSION BRACKET (5 Holes, For Jet Valve) - 2 per Valve Assembly		EACH	\$23.30
33	8728	VALVE FLAP (White, Plastic, Use inside of Jet Valve Assembly with Valve Lock) - 1 per Valve Assembly		EACH	\$4.66
34	8727	VALVE LOCK (White, Plastic, Use inside of Jet Valve Assembly with Valve Flap) - 1 per Valve Assembly		EACH	\$4.66
36	SP9204BK	LOCK-TABS (Black, Plastic, used to hold Bottom Lid to Body) - 2 sets per machine		SET OF 2	\$3.60
37	3394	BRACKET (Holds small black wheel to Body) - 2 per machine		EACH	\$3.60
38	2303	SCREW (18-8, 8/32" x ½", Phil Bev Head, Use to fasten the Lock-Tabs to the Body) - 4 per machine		EACH	\$1.27
39	7133	LOCK-NUT (Nylon Insert, Hex, Use to fasten the Screws of the Lock-Tabs) - 4 per machine		EACH	\$0.83
40	1626	GROMMET (Rubber, Fits around Cable Assembly, plugs into Body Assembly top hole) - 1 per machine		EACH	\$2.44
41a	3477	BRACKET (Plastic, fastens Float to inside of Body Assembly) - 2 per machine		EACH	\$2.44
41b	3109	FLOAT (Grey, Foam, requires Bracket, fastened to inside of Body Assembly) - 2 per machine		EACH	\$3.60
45	3350BK	SIDEPLATE (New improved design, Black, Plastic, requires Bushings and Locking Screw Assembly) - 2 per machin		EACH	\$46.62
	1775	LABEL (Sticker label for Sideplate, "Min and Max" settings for Locking Screw Assembly) - 2 per machine		EACH	\$1.27
47a	3351WT	BUSHING (White, Plastic, with hole, fastens to Sideplate, for non-sliding Fixed-Wheel Axle) - 2 per machine		EACH	\$2.76
47b	3352WT	BUSHING (White, Plastic, with slot, fastens to Sideplate, for sliding Free-Wheeling Axle) - 2 per machine		EACH	\$2.76
48	3398	JET NOZZLE (Black, Plastic, Fits into Jet Bracket and connects to Tubing for Power Washing) - 2 per machine		EACH	\$4.98
51a	11011	WASHER (Stainless Steel, for support of screw that secures Sideplate to Body) - 4 per machine		EACH	\$0.83
51b	2598	BUSHING (Nylon, 3/8"OD x .194"ID, Spacer for Sideplate top Screws) - 4 per machine		EACH	\$1.27
52	4612	SCREW (18-8, #8 x 1.08", Phil Pan Head, to fasten Sideplate to Body through Bushings) - 2 per machine		EACH	\$1.27
53	3393BK	SMALL WHEEL (Black, 2", for under Sideplates and fastened to front and back of Body Assembly) - 4 per machine		EACH	\$3.16
54	2719	SCREW (Stainless Steel, 8-32 x 3/8", to fasten Wheel Bracket to Body) - 4 per machine		EACH	\$1.27
55	2706	LOCK NUT (8-32, Fastens center wheel bracket to body) - 4 per machine		EACH	\$0.83
60	A6006	PUMP MOTOR (With Propeller, Red Impeller, 2-Pin Female Connect for Running Capacitor) - 1 per machine		EACH	\$213.79
	SPA6006KIT	MOTOR UPGRADE KIT (Includes Pump Motor and Running Capacitor) - 1 per machine		EACH	\$248.75
61	4402	PROPELLER - 1 per machine		EACH	\$12.25
63	6027	IMPELLER (Red) - 1 per machine		EACH	\$12.25
64	6028	IMPELLER HOUSING (Red) - 1 per machine		EACH	\$12.25
65	300096	TUBING (Clear PVC, 5/16"ID x ½"OD, connects to Impeller and Sideplates) - 2 feet per machine		PER FOOT	\$1.10
73	2301	SCREW (10-32, ½" Phil Pan Head, fastens P-Clip inside Body) - 2 per machine		EACH	\$1.27
79	6012	RUNNING CAPACITOR (Blue, Cylinder, 2-Pin Male Connect to Pump Motor) - 1 per machine		EACH	\$35.00
85	4501	SCREW (8-18 x ½, Phil Pan Head, To fasten the Extension Brackets to the Jet Valve) - 4 per machine		EACH	\$1.27
86a	SP5474	SHRINKABLE BUTT CONNECTORS (Light Blue, crimp closed and heat shrink to seal) - 4 per machine		PAIR	\$2.54
86b	SP1617	SHRINK TUBE (5/16" Wide, Black, Thin Rubber, For sealing electrical connections, Use under Shrink Tube 1619)		4 FEET	\$46.64
86c	SP1619	SHRINK TUBE (½" Wide, Black, Thin Rubber, For sealing electrical connections, Use over Shrink Tube 1617)		4 FEET	\$46.64
88	1625	SHRINK TUBE (¾" Wide, Black, Thick Rubber, For sealing electrical connections wider than ¼")		4 FEET	\$46.64
89	2670CBK	WHEEL COVER (Black, Dome Disc, Snaps-in Hub) - 4 per machine		EACH	\$2.86
90	2670	WHEEL ASSEMBLY (Black, Rubber, 6", includes Wheel Cover) - 4 per machine		EACH	\$9.33
91	11067	STAR WASHER (Stainless Steel, holds Wheels on Axles, used in pairs) - 8 per machine		EACH	\$3.60
92	3603	WASHER (Nylon, Flat, Use outside and inside of each Wheel) - 8 per machine		EACH	\$1.27
93	S101915	TUBE (Black, Plastic, 3" Oval, 15" Long) - 2 per machine		EACH	\$19.04
94	S3432	AXLE (White, Fiberglass, 21" x ½"OD, Front and Rear) - 2 per machine		EACH	\$11.64
95	S8740KIT	LOCKING SCREW ASSEMBLY (Nylon, Stainless Steel, for Free-Wheeling Axle settings) - 2 per machine		EACH	\$9.98
101	8101	FILTER BAG (Optional, Large, Fine Filter Bag) - 1 per machine		EACH	\$72.36
101	8201	FILTER BAG (Large, Mesh Filter Bag) - 1 per machine		EACH	\$70.15
102	SP8001	FILTER BAG CLIP (Black, Plastic) - 2 per machine		PAIR	\$8.10
103	S5306	FILTER SCREEN (White, Cage with corner and circle cutouts) - 1 per machine		EACH	\$34.05
105	A9201XC	BOTTOM LID ASSEMBLY (White, Square Wire Frame) - 1 per machine		EACH	\$115.43
106	9301	INTAKE VALVE FLAP (Black PVC Rubber) - 2 per machine		EACH	\$2.44
110	7182D	POWER SUPPLY (3-Prong Male, 90-Second Digital Timer, 38V, HV) - 1 per machine		EACH	\$198.56
111	7108	SOCKET ASSEMBLY (3-Pin, Male, 2-Wire) - 1 on Power Supply		EACH	\$10.49
112	7206	FUSE HOLDER (Mini fuse, Phillips Head style) - 1 on Power Supply		EACH	\$8.14
	7207	FUSE (2.5 Amp, Mini fuse, 250 Volt, Slow- Blow, for Power Supply with Dial or Digital Timer) - 1 on Power Supply		EACH	\$3.07
114	7208	NON-LIGHTED SWITCH (Thin, 1¼" x ½", Red, 3-Wire) - 1 on Power Supply		EACH	\$8.16
117	7041A	HANDLE (Soft Plastic, with Hardware) - 1 on Power Supply		ASSEMBLY	\$6.23
118	7102	CORD FOR POWER SUPPLY (3-Wire, Green, Black, and White) - 1 on Power Supply		EACH	\$11.66
119	7271D	TIMER 90 SECOND (Digital Display, 36 Volt, 2hr shut-off or Continuous Run) - 1 on Power Supply		EACH	\$52.47

→ Parts marked with this symbol should be installed by the Factory or an Authorized Service Center. Otherwise a Warranty Waiver must accompany any order for these parts.